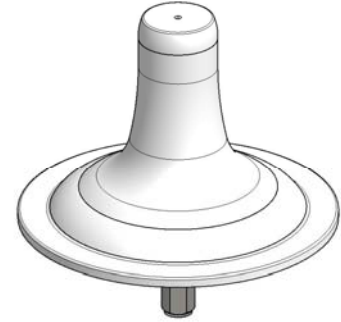



CELLULAR Omni Antenna

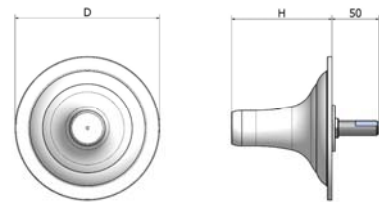
824~894 MHz / 02 dBi

CELL-IDT-02

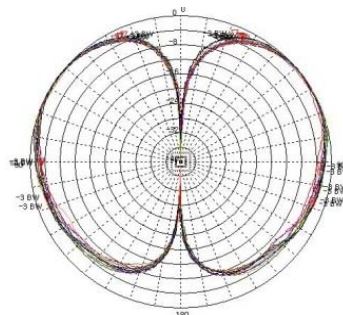
i. Electrical Specification		
Frequency Range	824~894MHz	
Polarization	Vertical	
Band Width	70 MHz	
Gain	≥ 2 dBi	
Beam width	Horizontal	≥ Nominal 360 °
	Vertical	-
F-B ratio	-	
VSWR	≤ 1 : 1.5	
Impedance	50 Ω	
IMD (2x20W)	-	
Maximum input power	5W	



ii. Mechanical Specification	
Radom Dimension (D x H)	Ø175 × 115 mm
Weight	360 g
Connector Type	N-J (Female)
Withstand Wind Pressure	60 m/sec
Radome Material	ABS
Radome Color	 Cool Gray 1C
Temperature	-40 °C ~ 70 °C
Packing Size (H x W x D) 50SET	-
Packing Weight 50SET	-



iii. Radiation Pattern



Vertical Pattern